

# 40-450 Watt

High efficiency monocrystalline silicon solar modules

0~+3% tolerance

ISO9001:2008, ISO14001:2004, OHSAS18001

Factory certificates

IEC61215, IEC61730, UL1703 Product certificates

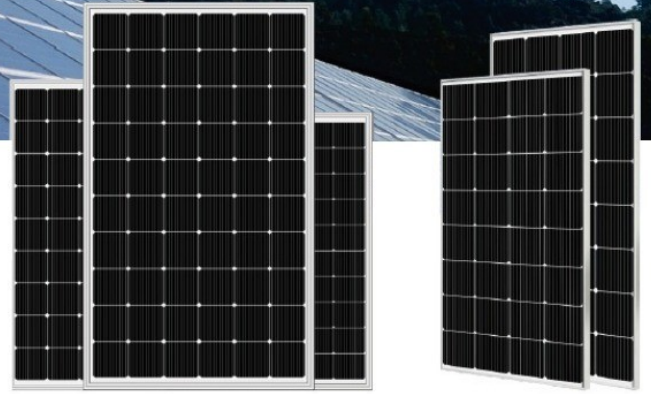


# TRISOL<sup>®</sup>

PERC

182 Cell 450W

## SP300M-60



## Solar module features



### PERC 182 cells

Better capability of current collection, larger area of power generation, nice appearance, more suitable for installation on the roof.



### High output power

Using PERC battery structure technology (Low resistance characteristics), output power of 60pcs monocrystalline cells reaches Max 450W (Highest Conversion efficiency to 20.9%)



### Low light performance

Using excellent glass and texture surface making of solar cell, outstanding performance can be obtained in low light condition.

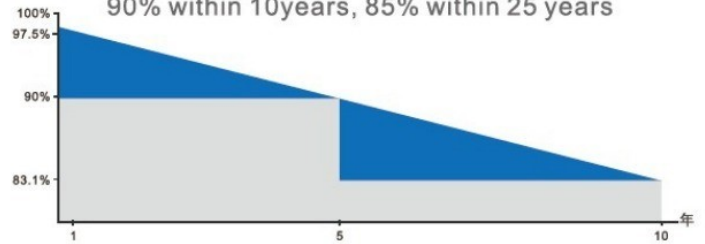


### Adaptability of harsh environment

Corrosion tests have certified in high salt fog and high ammonia environment.

## Guaranteed output power

90% within 10 years, 85% within 25 years



## Module Picture



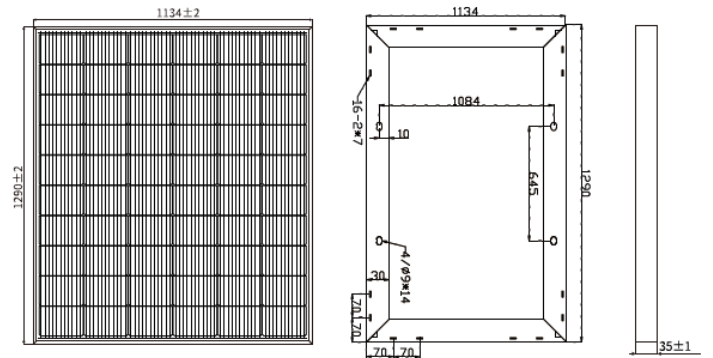
## SP300M-60

### Comprehensive Certificates

- IEC61215, IEC61730
- ISO9001:2015 Quality management systems
- ISO45001: Environmental management systems
- ISO45001:2018 Occupational health and safety management systems



## Mechanical Diagrams



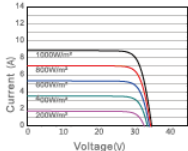
PS: Frame color and cable length can be customized

## Electrical Parameters at (STC)

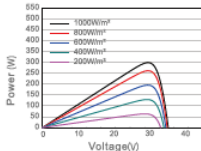
Module	Power (W)	Module Efficiency(%)	Voltage at Pmax(Vmp)	Current at Pmax(Imp)	Open Circuit Voltage(Voc)	Short Circuit Current(Isc)	Power Tolerance(%)
SP300M	300W	20.50%	34.20	8.77	41.04	9.30	±3%

## Characteristics

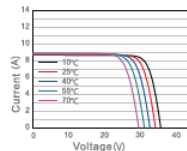
Current Voltage Curve SP300M/60



Power Voltage Curve SP300M/60



Current Voltage Curve SP300M/60



### Mechanical Parameters

Solar Cell(Type/Size)	MONO(182mm)
Solar Cells Number	60Pcs(6x10)
Dimension	1290x1134x35mm
Weight	14.3Kg/Pcs
Tempered Glass	3.2 mm High Permeability Coated
Frame	Anodized aluminum alloy
Junction Box	IP67, 3* bypass diode
Cable	4.0mm², (+)1000mm/(-)1000mm
Connector	Original MC4/Compatible MC4
Mechanical Load	Front 5400PA/back 2400PA

### Packing

Module Type	SP300M-60
Carton Size	1310x1160x85mm
Number	2Pcs/Ctn
Weight	29Kg/Ctn
Volume	0.129Cbm/Ctn
20GP Container	444Pcs
40HQ Container	1088Pcs

STC: Light intensity 1000W/m² Battery temperature: 25°C atmosphere quality=15

NOCT: Light intensity 800W/m² Battery temperature: 20°C atmosphere quality=15 wind velocity 1m/s